
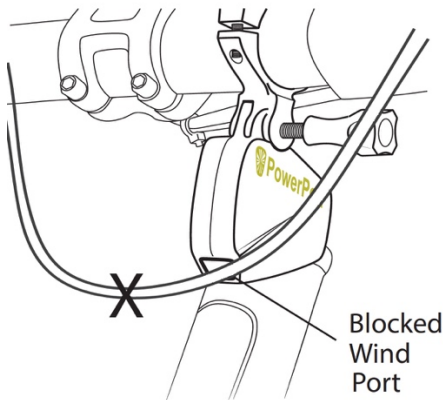




PowerPod Tips and Troubleshooting
November 2015

- 1) PowerPod status light does not turn on when I click its button
 - a. PowerPod battery needs charging. Connect PowerPod to USB charger. Click button; status light will flash red continuously. When the battery is fully charged the status light will turn off
 - b. After charging, if PowerPod light remains unresponsive to button clicks, press-hold its button CONTINUOUSLY for about 10 seconds, *until you see the status light flash*. This “Hard Reset” reboots the PowerPod.
- 2) Status light is RED after sensor pairing (PowerPod instructions, Step 4)
 - a. Make sure you have an ANT+ speed or speed/cadence sensor (“SPEED SENSOR”) installed on your bike. Look for an ANT+ logo on your sensor:

 - b. Make sure the spoke magnet passes within 1-2 coin widths of the SPEED SENSOR. Then, confirm proper operation of your SPEED SENSOR by spinning your rear wheel; your bike computer should show speed in its display. If confirmed, perform PowerPod Step 4 instructions again.
 - c. If you don't see bike speed, remove the battery from your SPEED SENSOR, insert battery “backwards” for a moment, then reinsert it normally. This resets the speed sensor. Then, confirm proper operation of your SPEED SENSOR by spinning your wheel; your bike computer should show speed in its display. If confirmed, perform PowerPod Step 4 instructions again.
 - d. If you still don't see bike speed, replace the battery in your SPEED SENSOR. Then, confirm proper operation of your SPEED SENSOR by spinning your wheel; your bike computer should show speed in its display. If confirmed, perform PowerPod Step 4 instructions again.
 - e. If you still don't see bike speed, your speed sensor is defective.
- 3) I see zero watts, or low watts, or high watts only for the first 8 minutes of my ride, then power becomes normal
 - a. PowerPod sensor is not tightly fastened to its mount. After attaching PowerPod to its mount, but before tightening the mount bolt fully, push the PowerPod from the rear, until its rotation is stopped by the mount. Then, tighten the mount bolt firmly, **so that the PowerPod cannot rotate**.
 - b. After reattaching the PowerPod sensor, sensor is in a different angled position compared to its prior attachment. Before tightening the mount bolt fully, but push the PowerPod from the rear, until its rotation is stopped by the mount. Then, tighten the mount bolt firmly, **so that the PowerPod cannot rotate**.

- 4) I see zero watts on my bike computer screen after stopping for a rest break
 - a. PowerPod has gone to sleep. Click button. Light will flash Green.
- 5) I see zero watts on my bike computer screen *even after riding for 8 minutes*
 - a. PowerPod is turned off. Click button. Light must become solid Green.
 - b. Cadence sensor is not functioning properly. Make sure that your cadence magnet passes within 1-2 coin widths of the cadence sensor. Make sure that cadence sensor is attached correctly to chain stay so that it cannot move. To check proper operation of cadence sensor, spin bike crank backwards for 5 seconds, and confirm that non-zero cadence (RPM) is shown on your bike computer screen.
 - c. Perform PowerPod instructions Step 7: spin the bike rear wheel, then click the PowerPod button. After a few seconds the status light should show solid Green, indicating successful pairing with your SPEED SENSOR. If the status light does not turn solid green, then perform Troubleshooting Step 2.
 - d. Perform PowerPod instructions Step 5, making sure to follow your bike computer's pairing instructions.
- 6) After going over a bump, my watts change abruptly to higher or lower values for the next 8 minutes, then become normal.
 - a. PowerPod is not firmly attached to its mount, allowing it to rotate after hitting a bump. Push the PowerPod from the rear, until its rotation is stopped by the mount. Then, tighten the mount bolt *firmly*, **so that PowerPod cannot rotate**.
- 7) My watts seem consistently too high or too low.
 - a. Make sure PowerPod wind port is not blocked or obstructed by bike cables



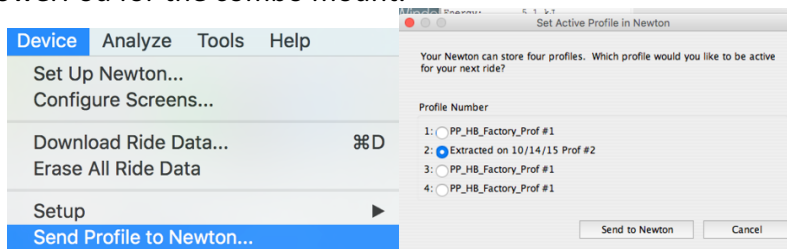
- b. Make sure Indoor Trainer mode settings are correct (see below)
- 8) When I put PowerPod on another bike, I don't see power.
 - a. Follow PowerPod instructions, steps 4 to 6, to set up PowerPod on your second bike. *Each time you change bikes you will need to perform steps 4 through 6, or **optional**: see Isaac instructions below to create a separate "profile" for your other bike.*
- 9) PowerPod does not work with my indoor trainer or rollers.
 - a. Use Isaac instructions below to set up your PowerPod for use with indoor trainer/rollers

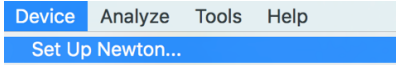
USING POWERPOD WITH ISAAC SOFTWARE

- Install free Isaac software for Mac/PC, available here: <http://www.ibikesports.com/index.php/downloads/>
Mac users: The first time you run Isaac, make sure to hold the “control” button on your keyboard, then click on the Isaac icon, then select “Open” from the menu that appears. This procedure temporarily bypasses the security features of OSX.
- Connect PowerPod to your computer using its USB cable. Click PowerPod button to turn it on. When PowerPod is connected to Isaac, a green box will appear around the USB icon located at the top of menu bar:



- **ONLY if you are using the PowerPod combo mount**, use Isaac to select PowerPod Profile 2 using the command below. After selecting Profile 2, click “Send to Newton” button. Then, perform PowerPod instructions steps 4), 5) and 6) to complete the setup of your PowerPod for the combo mount.

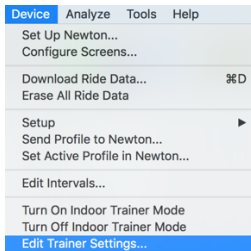


- If you are using the PowerPod handlebar mount, select profile 1, 3 or 4, following the instructions immediately above.
- Use the Isaac command “Device/Set up Newton...,” to fine-tune the settings of your PowerPod, or set up in PowerPod a new profile for another bike.
 - 1) Connect PowerPod to your computer and launch ISAAC software
 - 2) Using ISAAC Software, “Device/Set Up Newton...” wizard:A screenshot of the Isaac software interface showing the 'Device' menu with the 'Set Up Newton...' option highlighted in blue.
 - 3) If you’re fine-tuning your PowerPod, then select Profile 1 or 2
 - 4) If you’re adding a new bike, select a new profile (Profile 1 or 2 has already been used for your first bike)
 - 5) Type in a name you’d like to have for your profile
 - 5) Click the “Next” button and enter your bike and rider information as instructed by the “Set Up Newton” windows.
 - 6) In the final window of the wizard, choose “Better Accuracy”
 - 7) IMPORTANT: Follow PowerPod instructions steps 4) through 6) to pair your PowerPod to your bike’s speed or speed/cadence sensor

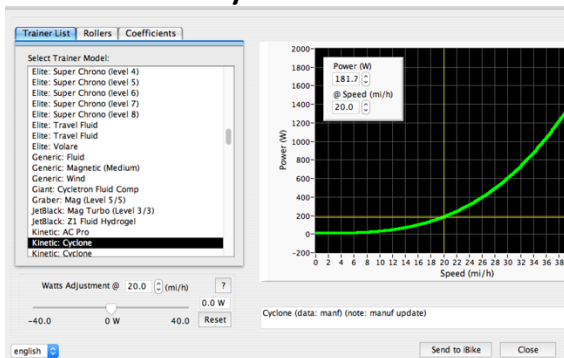
TIP: If you have more than one bike, and use Isaac create separate PowerPod profiles for each of them, then PowerPod will automatically set itself to the profile that you’re using for today’s bike ride.

To use PowerPod with your indoor trainer or rollers:

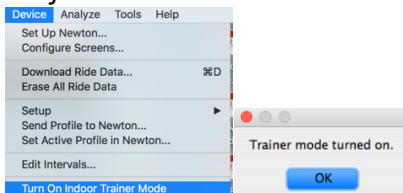
1. Connect PowerPod to your computer, click button to turn it on, then launch Isaac software
2. Select the Isaac command “Device/Edit Trainer Settings...”



3. Select your indoor trainer OR rollers model from the list underneath the tab. In this example, “Kinetic Cyclone” indoor trainer has been selected. Then, in the bottom of the window click the “Send to iBike” button below the speed/power graph. PowerPod will “memorize” your indoor trainer model in its memory



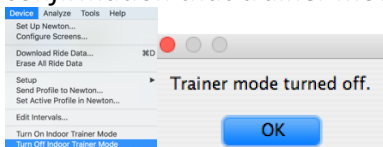
4. To turn on indoor trainer mode, select this command from Isaac, then wait for Isaac's confirmation that trainer mode has been turned on:



5. IMPORTANT: ONCE ENABLED, INDOOR TRAINER MODE WILL REMAIN “ON” FOR ALL SUBSEQUENT POWEROD RIDES, UNTIL YOU TURN IT OFF.

IMPORTANT: WHEN TRAINER MODE IS “ON”, POWERPOD WILL NOT PROVIDE ACCURATE POWER READINGS WHEN USED FOR OUTDOOR RIDES.

6. To turn indoor trainer mode off, select this command from Isaac, then wait for Isaac's confirmation that trainer mode has been turned off:



7. IMPORTANT: WHEN INDOOR TRAINER MODE IS “OFF”, POWERPOD WILL NOT PROVIDE ACCURATE POWER READINGS WHEN USED FOR INDOOR RIDES.